


The background is a solid teal color. It features several thin, white, abstract lines that form loops and curves, creating a modern, organic feel. The lines are scattered across the page, with some overlapping.

SODIC
MEDICAL
DISTRICT

The image features a teal background with a pattern of bubbles of various sizes. A solid teal vertical bar is positioned on the left side. The text 'STATE-OF-THE-ART MEDICAL FACILITIES' is written in white, bold, uppercase letters in the bottom right corner.

**STATE-OF-
THE-ART
MEDICAL
FACILITIES**

SODIC MEDICAL DISTRICT

// WORLDS WITHIN

SODIC CITY

SODIC City is where the hustle and bustle of everyday gives way to a more efficient, premium, and welcoming nature within inspiring environments. From the varied residential communities and choice establishments to the sculpted landscapes, SODIC City highlights a more refined style, a higher quality, and a superior concept of convenience for those who aspire to greater things.



// A THRIVING SOCIAL HUB

SODIC COMMERCIAL



EDNC



PAVILION

& more to come

Artfully designed to surround residents with authentic experiences of all sorts, SODIC Commercial is a fully-integrated world of recreation and discovery, promising limitless social interaction and fun. From signature brands, thriving business districts, and upscale grocery stores to leading schools, world-class restaurants and next-generation medical centres, SODIC Commercial is a spirited nexus where everything and everyone belongs.



// A CENTERPOINT FOR SUCCESS

SODIC CITY

SQM **17,250**

160

CLINICS IN SMD

85

OPERATING CLINICS,
LABS AND PHARMACIES

300

UNDERGROUND
PARKING PLOTS

ACCESSIBILITY

9

MIN FROM



7

MIN FROM



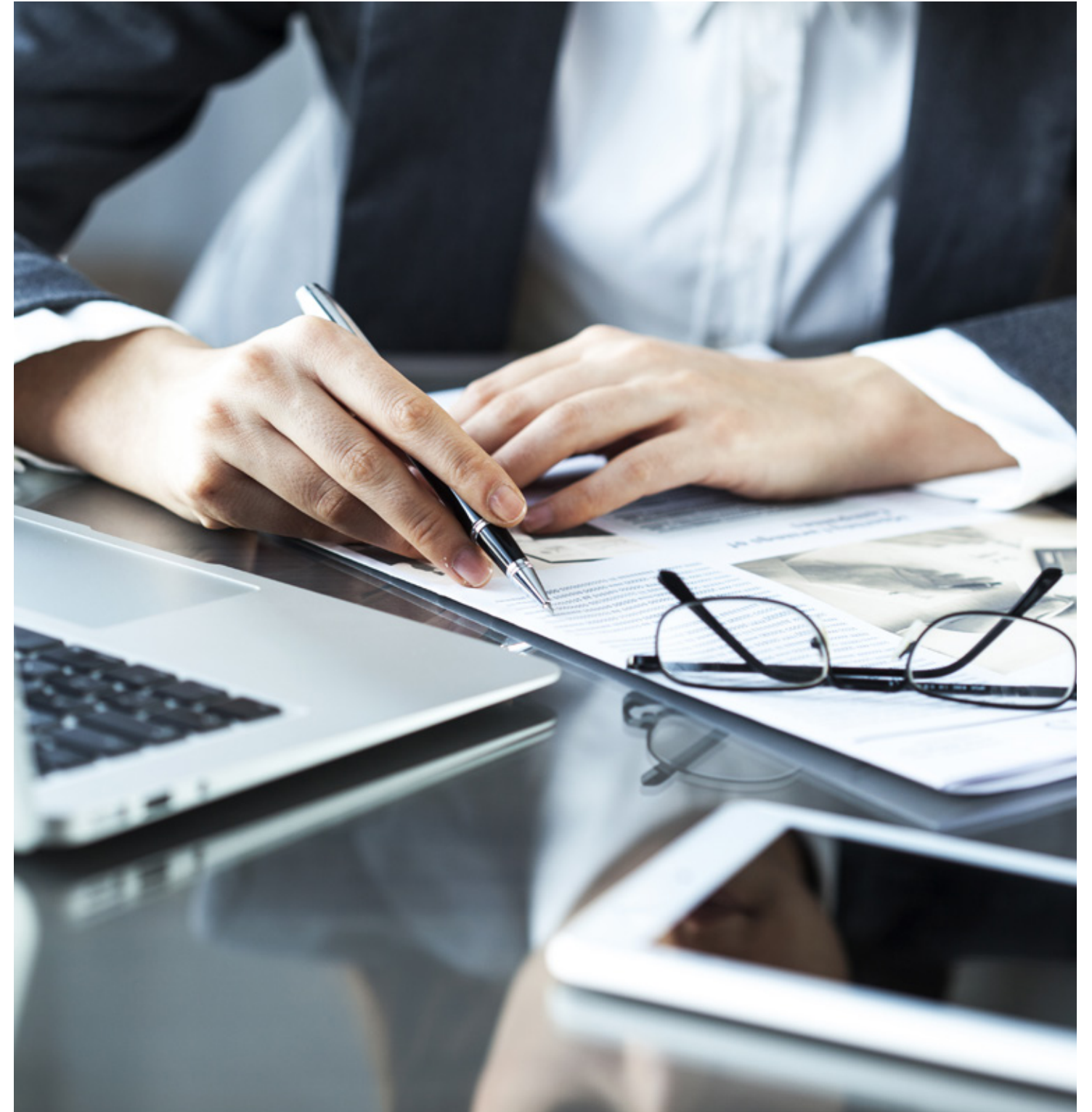
11

MIN FROM



15

MIN FROM



DIVERSE AMENITIES

// FACTS & FIGURES

2,261
LIVABLE UNITS

25K
CURRENT RESIDENTS
AS OF 2022

635
OFFICE SPACES

22
BANKS

3
SCHOOLS

5
PHARMACIES

2
MEDICAL CENTERS

1
HOTEL
OPERATING SOON



SODIC MEDICAL DISTRICT

// CLOSE PROXIMITY

ACCESSIBLE FROM ALL ROUTES

Ideally situated within SODIC West, SODIC Medical District is directly on Dahshour Road, making it easily accessible from all routes in 6th of October through Juhayna Square and Cairo-Alexandria Road. SODIC West is seamlessly connected to Downtown Cairo via a number of newly renovated highways which you can alternate between.





**REDEFINING
THE FUTURE OF
HEALTHCARE
EXCELLENCE**

SODIC MEDICAL DISTRICT

// YOUR ONE-STOP HEALTHCARE DESTINATION

SODIC MEDICAL DISTRICT

SODIC Medical District is a 360 outlook on healthcare, thanks to a progressive vision combining medical labs equipped with the highest technology, as well as high-tech speciality, in addition to retail choices for doctors to take pride of their space while providing the highest standards of medical quality to their patients.



// EFFICIENTLY DESIGNED

UNIQUE HEALTHCARE AMENITIES

SODIC Medical District is an exclusive address, guaranteeing ultimate success, thanks to an unrivaled host of world-class amenities at your fingertips. Every aspect of the project captures the best in timeless luxury, as well as seamless accessibility for a convenient experience, second to none.



Two entrances with access from the main road and piazza



Security 24/7, housekeeping, and maintenance of public areas



Shared waiting area



CCTV and security patrols.



Double-access retail units with dual frontage on both sides of the building



Front desk



Private bathrooms for all units



Double height entrance.



Two-level underground parking



3 High speed elevators



Handicapped access facilities



Advance FF system



Medical waste disposal services



// A 360 APPROACH TO MEDICAL EXCELLENCE

VARYING SERVICES UNDER ONE ROOF

The elemental edge of SODIC Medical District lies in an unmatched host of services that cater to every medical need. The destination provides a fully-integrated outlook on healthcare offering:

Various Specialities

- Oncology
- Endocrine/Diabetic
- Pediatric
- Respiratory
- Cardiology & Vascular surgery
- Gastroenterology & Endoscopy
- Clinical nutrition
- Leading medical labs

Medical Centers:

- Nutrition consultant & body re-shape centre
- Dermatology & skin care centers
- Ophthalmology center
- Dental center
- Diet & nutrition center
- Orthopedic
- ENT center
- Physiotherapy



SODIC MEDICAL DISTRICT

// PROVIDING THE BEST IN THE INDUSTRY

EL NADA HOSPITAL

One of Egypt's most prominent hospitals, El Nada Hospital brings leading maternity and neonatal services to 6th of October with a flagship building rolling out on 9000 sqm.

Featuring a hospital covering 4525 sqm of 4800 sqm, El-Nada is designed to accommodate a professional blood bank, a cutting-edge pharmacy, and a technologically advanced lab, in addition to a cafeteria offering quality food to ensure a comfortable visit or long-term stay.



— SODIC MEDICAL DISTRICT

// EXCEPTIONAL EXPERIENCES FOR EVERY TASTE

DINING, ENTERTAINMENT & RETAIL

SODIC Medical District hosts a spirited piazza, offering numerous F&B and retail choices on the ground floor. Opening onto green surroundings, the piazza takes convenience to a whole new level, thanks to select cafes, a safe playground for kids, a chocolate shop, and a photography studio for capturing special memories.

RETAIL MIX AT GROUND FLOOR:

- Pharmacy, Radiology & Labs
- Coffee & snacks
- Medical, retail and F&B services.



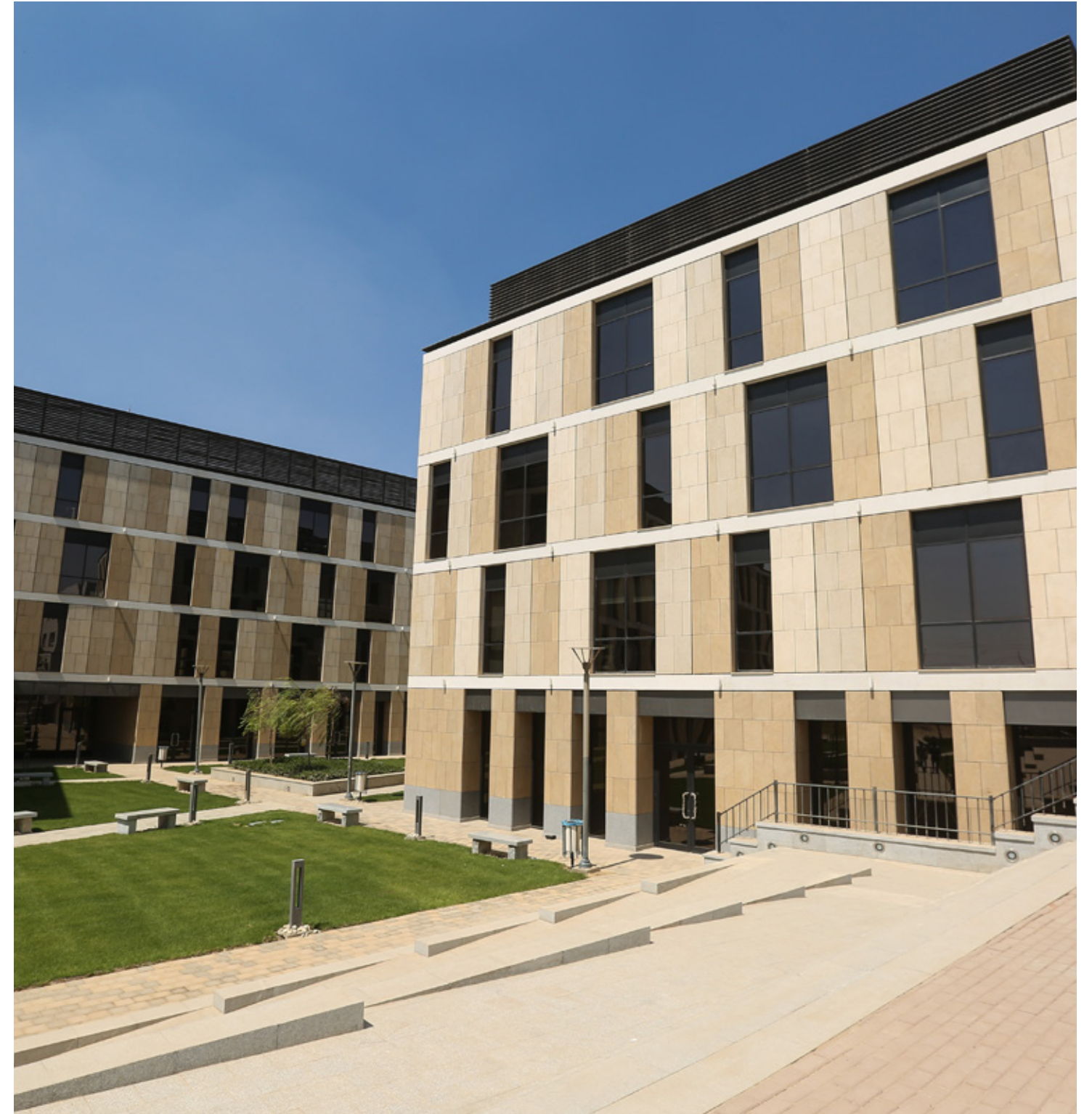
— SODIC MEDICAL DISTRICT

// A CUTTING-EDGE DESIGN THAT STANDS OUT

SMART & AMBIENT ARCHITECTURE

SODIC Medical District is built in interlocking L-shaped buildings, comprised of Western Clinics and El Nada Hospital overlooking a central garden and a spirited playground at heart. The smart land distribution is elevated over a multi-level garage for maximum convenience, providing all clinics with sweeping views on lush scenery, as well as natural daylight.

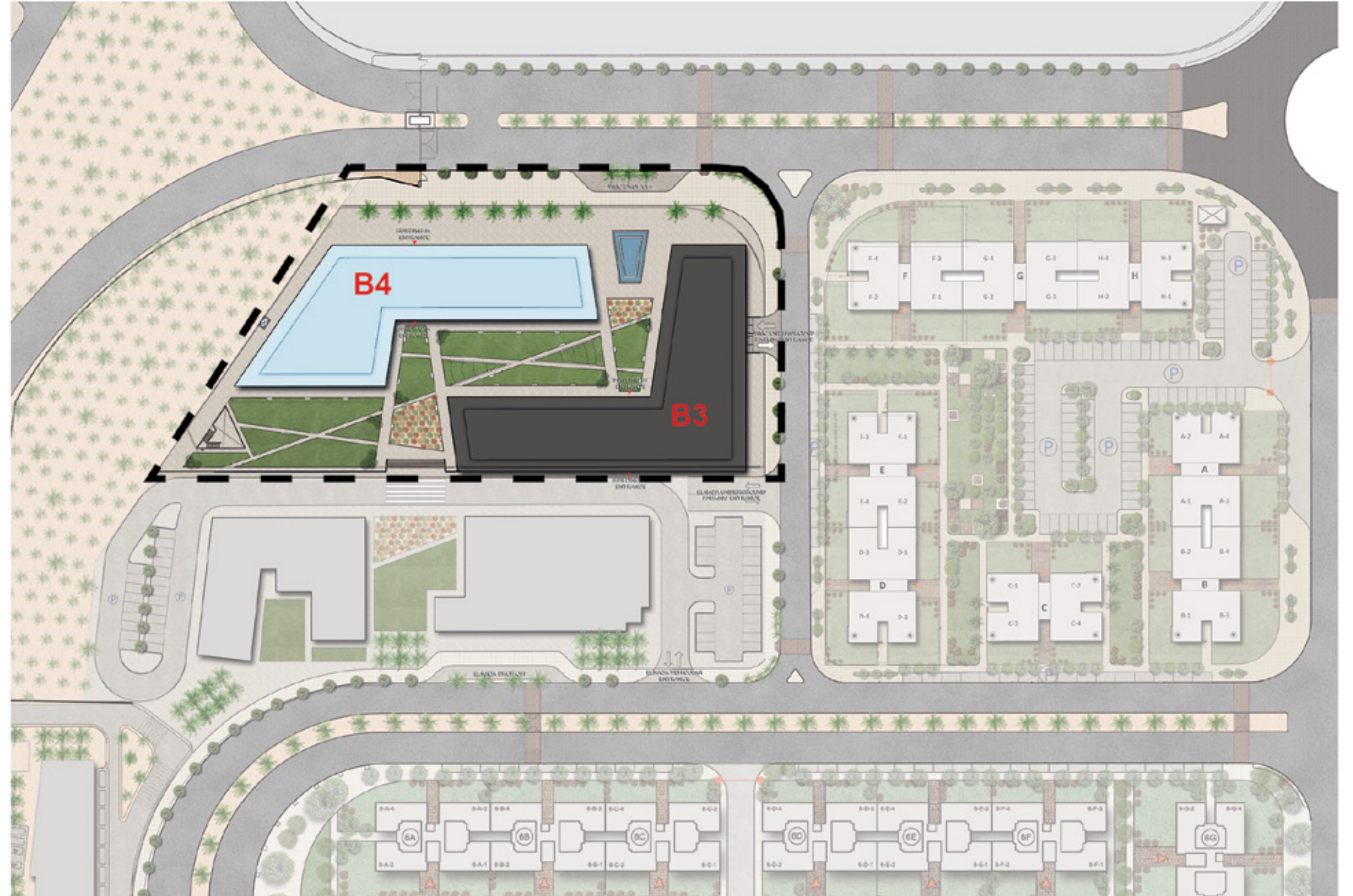
Designed to foster medical excellence, each building boasts ground level spaces to accommodate cutting-edge labs and retail venues on the ground floor while giving room for private clinics to rise on three impressive levels above.



The background of the slide is a solid light blue color. It is decorated with several thin, white, hand-drawn style lines. One line starts from the left edge, curves downwards, and then loops back up towards the center. Another line starts from the center, loops upwards and to the right, and then curves back down towards the bottom right. A third line starts from the bottom left and curves gently across the bottom of the slide.

FLOOR PLANS

// SITE PLAN



// GROUND FLOOR

9 RETAIL UNITS



// FIRST FLOOR

22 CLINICS



// SECOND FLOOR

21 CLINICS



// THIRD FLOOR

30 CLINICS



Third Floor

// BUILDING FINISHES & TECHNICAL SPECIFICATIONS

ELEVATIONS:

- Structural glazed system, double glazed.
- Marble cladding
- Tempered clear glass handrail

INTERIOR FINISHING FOR ENTRANCES: Corridors & lobbies

- Flooring: Grey granite
- Walls: Marble, oak veneer wooden cladding and paint
- Ceiling: Gypsum board ceiling

BUILDING SYSTEMS AND MEP:

- 3 high speed elevators
- Life-safety generators
- CCTV and access control system
- Fire detection and firefighting system (sprinklers)
- Fiber optics network (Triple play)
- Secured entrances and underground parking
- Earthing system
- Provisions for back-up generator

CLINICS FINISHES:

- Clinic door is single leave wooden oak veneer (fire rated door)
- Private bathroom fully finished + sanitary fixtures
- Tie-in provision for sink.
- Floors: Porcelain tiles.
- Walls: Plastic washable paint.
- Ceiling: Gypsum board ceiling.



// ABOUT SODIC

Building on a history of almost two decades of successful operation in Egypt, SODIC is one of the country's leading real estate development companies. Headquartered in Cairo and listed on the Egyptian stock exchange, SODIC brings to the market award-winning large-scale developments, meeting Egypt's ever-growing need for high quality housing, commercial and retail spaces.

We pride ourselves on our passion for excellence and commitment to fostering long-term relationships with our clients, shareholders, business partners and employees, which has helped us grow into the corporation we are today.





SEIZE THE
FUTURE OF
MEDICAL
POSSIBILITIES
TODAY

